

Investing In Your People Getting Better Results

Build the right relationships

- The CPCU Society's global community connects members with professionals who have the expertise to move your organization forward.

*Networking and knowledge sharing introduces members to new perspectives, enabling them to think differently, solve problems creatively, and be a better employee—**Abi Clough, CPCU**, CEO, AbiLeads*

Access the right information

- The CPCU Society's educational offerings keep members on top of current issues—an investment in self-improvement and the success of your organization.

*The CPCU Society exposes members to aspects of the industry that fall outside of their current job roles—allowing them to make better decisions.—**Christian Whitt, CPCU**, Member Relations Director, APCIA*

Gain the right experience

- The CPCU Society provides its members with the hands-on leadership experience necessary to advance your organization into the future.

*Volunteer leaders develop the knowledge and confidence to coach up – keeping their peers and leadership up-to-date on key industry issues.—**Dawayne Eason, CPCU**, Technology Analyst, State Farm*



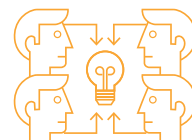
125

Chapters



12

Committees
and Task Forces



8

Special Interest
Groups

The CPCU Society has over **1,200** active volunteer leaders developing the confidence and skills that will enable them to step up and lead when your organization needs it most. Is your company on the list?

"I want my employees to be members of the CPCU Society because it's a year-round activity. It's networking with colleagues, not only locally but also internationally and throughout the U.S. It's the opportunity to meet the people that you need to know when you have an issue that you're trying to solve. When you hire people, you want to hire somebody who's going to continue to reach and strive to be better. That's what the CPCU Society helps you accomplish."



Skip Counselman, CPCU
Chairman, RCM&D, Inc.



Rob Galbraith, CPCU
Director of Innovation, AF Group

"The CPCU Society has helped me tremendously, in both my career and personal growth. I started my career as an analyst, and I don't think that my management at the time saw me as somebody who could be in an elevated role or as a people leader. It wasn't until I became a volunteer leader and president of my local chapter that our executives saw me in a different light. I was gaining that leadership experience and they saw firsthand that I could be that person who could lead a team."

CE for CPCUs— Fulfill Your Ethical Promise

Are Your CPCUs in Good Standing?

Participate in a Program With Purpose



In July 2016, The Institutes formalized a CE reporting component for the CPCU designation to recognize the commitment of CPCUs to stay up to date.



Existing CPCUs were given a four-year grace period to report their first cycle of 24 hours of CE. This expires on December 31, 2020.



The Institutes are launching a new campaign to publicly recognize CPCUs who report and are in good-standing—including a revamped good standing list on the website and digital badging.



As a reminder, the reporting fee is waived for CPCU Society members, who can also access key benefits that are eligible for credit, such as complimentary webinars.

“The CPCU Society elevates your ability to operate and represent yourself and your company at a much higher level than you would otherwise. If you want to keep the right talent and you want them to grow in their careers, you’ve got to support them from an educational standpoint. You’ve got to support their participation, and that shouldn’t come out of their pocket. You want to take away all the reasons that someone might not become involved and give them all the reasons they should become involved.”



John Smith, CPCU
President & CEO,
Pennsylvania Lumbermens
Mutual Insurance, Co.

“Membership in the CPCU Society affords an opportunity to not only utilize your current skill sets but also develop new ones. If you are at a place in your career where you are waiting for the chance to be in a formal leadership position, you can leverage your Society activities to demonstrate that you have those skills.”



Traci Adejeji, CPCU
Program Lead, AIPSO